



Promenade Des Anglais - Voyage à Tunis | Collection Spring 2019

Promenade Des Anglais

The legendary Promenade Des Anglais on the Baie des Anges has its origins in the second half of the 18th century when wealthy English would spend the winter in Nice or France to enjoy its milder climate. The Côte d'Azur, which stretches from Monaco across Nice, Antibes, Cannes and Saint Tropez along the Mediterranean coast boasts an azure blue sea and iconic cities. Famous for the rich and beautiful flocking to its shores the Côte d'Azur has a sophisticated look and feel with opulent promenades, luxury moored yachts, extravagant casinos and lavish bars.

The *Ballade* print, a painted watercolour which delicately and poetically illustrates a promenade and its pedestrians serves as the starting point to this collection. The *Plage* print on a light linen narrates the story of summer resorts and carefree excursions at the beach with lively colours. *Filet de Pêcheur*, artistic in nature, is made from colourful threads and evokes knotted fishing nets, while *Sur le Quai* simulates the motion of light on waves and has a transparent look reminiscent of water. The handcrafted fabric *Petite Terrasse*, inspired by a classic tile pattern rounds off the collection with a charming geometry that embodies the Mediterranean spirit.

Voyage à Tunis

This collection is inspired by the famous journey to Tunisia taken by the painters Paul Klee, August Macke and Louis Moilliet in 1914. The Near East with its exquisite gardens and exotic architecture, bustling souks, lush oases and arid deserts scattered with camels has always represented something of a paradise to European artists. This region inspired and defined their style – especially their perception of colour - while helping cut the ties they had had with the ideals of antiquity.

The centrepiece of the *Voyage à Tunis* collection is a linen print inspired by the style of Paul Klee. Clay huts, palm trees and native animals such as donkeys and camels are depicted in a warm and alluring interplay of light under a hot equatorial sun. *Oasis*, an embroidered fabric of an idyllic garden, and *Feuille de Bananier*, with its stylised banana leaf embroidery design also embodies this ambience. *Douz* features an integrated, abstract stripe pattern mimicking an oasis shimmering in the light from afar, while *Nabeul* which bears the name of a Tunisian city and resembles the mosaics found there through its woven structure, round off this collection.

The colour palette, patterns and stylisations of this collection replicate the light of North Africa and the unique atmosphere found there. The Near East continues to inspire and captivate us.

Promenade Des Anglais - Voyage à Tunis | Collection Spring 2019

Sur le quai | 19548

5 Colourways
60% Linen, 25% Polyester,
15% Cotton
Width: 290 cm



This design captivatingly replicates the reflection of light on the surface of water. This semi-transparent fabric gets its vibrancy from the interplay between matte and shiny threads and the range of different colours set against a subdued linen background.

Côte d'Azur | 19551

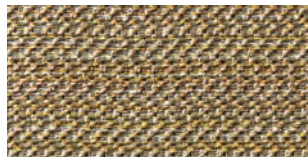
4 Colourways
34% Polyester, 29% Linen,
24% Cotton, 10% Viscose,
3% Lyocell
Width: 300 cm



This delicate semi-transparent fabric, with its light wave pattern and pastel colour combinations, radiates elegance and charm.

Tozer | 19549

9 Colourways
39% Cotton, 24% Acrylic, 22%
Polyester, 15% Viscose
Width: 145 cm



A decorative design which impresses with a horizontal structure and fascinating shifts of colour throughout its The shades and floating patterns of this fabric gives it a unique character and distinctive structure.

Ballade | 19552

4 Colourways
100% Linen
Width: 150 cm



Pedestrians' ambling along a promenade, painted delicately using a watercolour technique, are depicted on this light and beautiful linen product. The centrepiece of this collection and a particularly special pattern *Promenade des Anglais* is modern and charming.

Plage | 19550

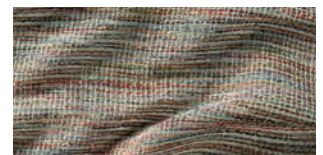
5 Colourways
65% Polyester, 20% Linen
11% Viscose, 4% Lyocell
Width: 300 cm



A light decorative fabric with a highly geometric and expressive pattern. Despite its strong shapes, its colours are subdued, and are reminiscent of a summer breeze, the beach and the colours of parasols. This decoration can also be railroaded.

Filet de Pêcheur | 19553

8 Colourways
100% Polyester
Width: 310 cm



Fishing nets were the inspiration for this transparent fabric. Colourful yarns and a striking net structure lend it vivacity and appeal.

Antibes | 19554

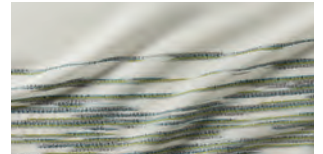
5 Colourways
64 % Linen, 22 % Polyester,
14 % Viscose
Width: 300 cm



This semi-transparent base fabric with a natural linen-like appearance is embellished with a decorative strip made from voluminous, shimmering thread. This eye-catching overlay has a near-classic look due to its two-tone effect and even striped pattern. It is railroaded.

Djerba | 19557

3 Colourways
44 % Linen, 22 % Polyester,
15 % Cotton, 12 % Viscose,
5 % Acrylic, 2 % Lyocell
Width: 295 cm



A horizontal stripe consisting of voluminous threads in three different colourations traverses this fine linen-cotton fabric. The different characteristics of these threads are what give the horizontal stripes on this fabric their charm.

Petite Terrasse | 19555

4 Colourways
80 % Cotton, 20 % Viscose
Width: 137 cm



A magnified houndstooth pattern. All will appreciate the weaving process used to create this handcrafted woven fabric. The warp and weft are clearly recognisable and form a wonderful blend of colours; a lovely complement to the other fabrics in this summery collection. Its name reveals the inspiration for its style – the tile pattern of a Mediterranean patio.

Voyage à Tunis | 19558

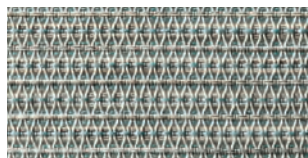
4 Colourways
100 % Linen
Width: 150 cm



As the name suggests, this linen print is an homage to the journey to Tunisia taken by the painter Paul Klee. Oases, palm trees, huts and dromedaries make up a dream-like world of images. This decorative fabric depicts the North African landscape playing with colours in the unique light of the Near East. Each colourway replicates the atmosphere during different times of the day – from the briskness of the sunrise in the morning, to the fiery midday sun, right through to the ambient twilight of the evening.

Nabeul | 19556

3 Colourways
100 % Polyester
Width: 310 cm



This material is evocative of a net. Twine-like threads support the special structure of this weave. The colour gradient of the threads creates an additional decorative effect.

Feuille de Bananier | 19559

4 Colourways
Ground: 100 % Polyester
Embroidery: 100 % Viscose
Width: 140 cm



A rich embroidery running across a background of raw silk makes up this banana leaf design. The two variations feature leaves in complementary colours.

ETAMINE

PARIS

Vence | 19560

6 Colourways

50 % Viscose, 25 % Cotton,
20 % Polyester, 5 % Linen

Width: 140 cm

Martindale: 35.000



This upholstery fabric gets its vibrancy from its silhouettes. The chenille thread used further enhances its vivacity. A strong design, of which the proportions are ideal for both small furniture and large seating. It is available in five different colours that complement the collection.

Oasis | 19562

4 Colourways

Ground: 100 % Polyester

Embroidery: 100 % Polyester

Width: 144 cm

Usable Width: 128 cm



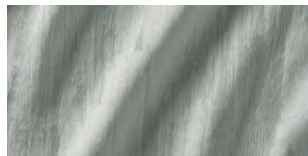
This embroidery depicts a leafy paradise. The colours stand in contrast to the natural structure of the background.

Douz | 19561

10 Colourways

52 % Linen, 34 % Cotton,
14 % Polyester

Width: 300 cm



The charm of this light and high-quality linen fabric, which is almost monochrome in colour, can be found in its subtle Jacquard pattern with versatile silhouettes resembling woodgrain. This transparent fabric is railroaded.